

Smiley Monkey Game

Directions:

Introduction of the Concept of Antonyms

Materials Needed:

A sharp and blunt pencil, a ruler, a puzzle piece, something hard and something liquid.

You will use these game cards over several Verbal into Written Expression Lessons to introduce antonyms.

Introduce 3 or 4 the first day.

Review the meanings the next day and introduce 2 more.

liquid



solid



1. Hold up the sharp pencil and the blunt pencil and say, "This pencil is sharp but this one is blunt. (Which means dull.)"

Show the ruler, "I am holding the ruler vertical and now I am holding it horizontal."

Show the puzzle, "I have two puzzle pieces that are connected and now they are separated."

Show the hard object, "This rock is solid, and this drink is liquid."

2. What did you notice about all of the items that I showed you? (They are opposite.)

"Another name for words that have opposite meanings is Antonyms."

When all of the antonyms have been introduced, then you can play Go Fish or Concentration with the cards.

destruction



construction



**Phillips
Fundamental
Learning
Center™**



vertical



horizontal



natural

artificial



sharp



calm



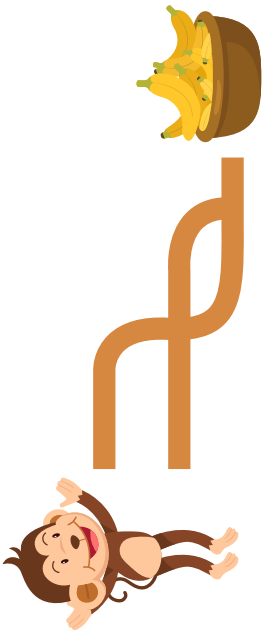
excited



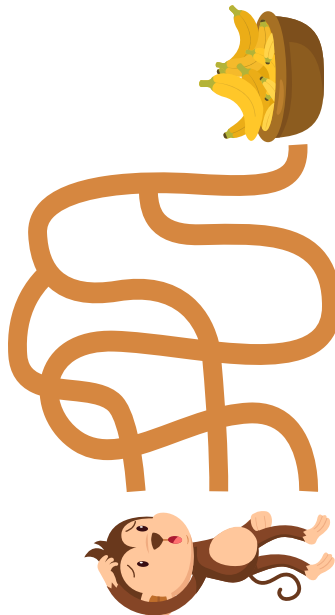
blunt



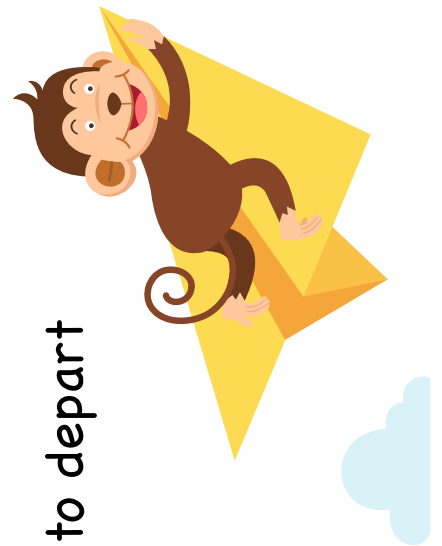
simple



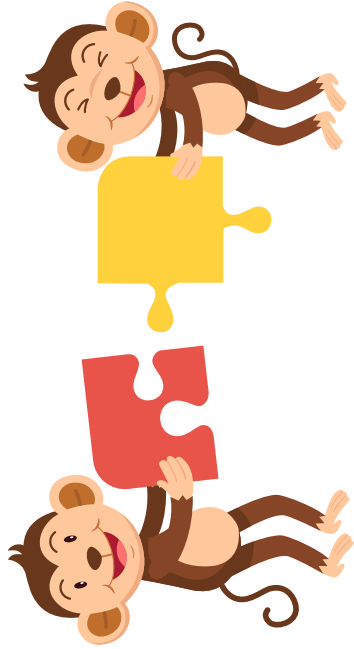
complicated



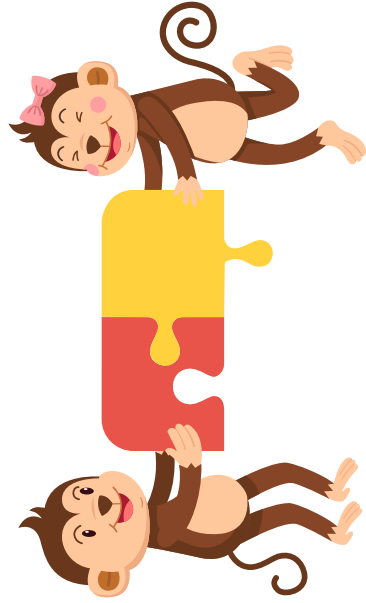
to depart



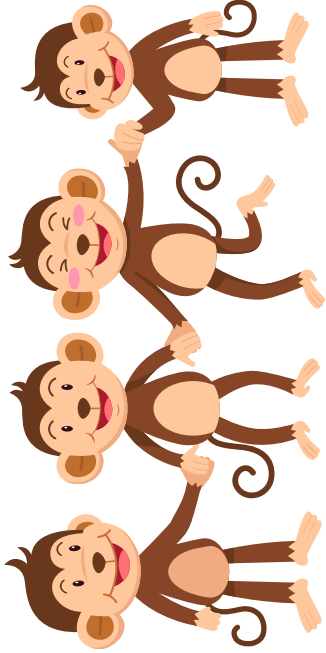
to separate



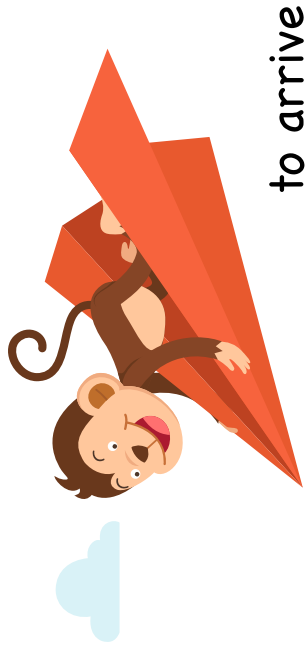
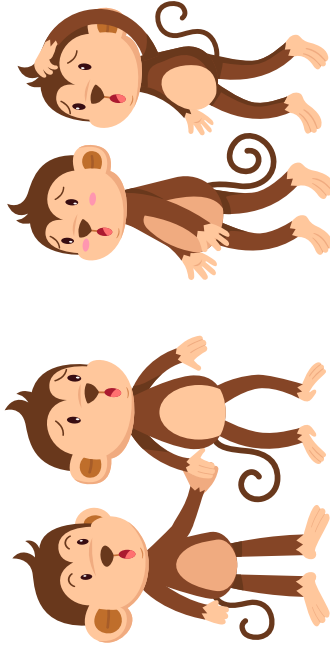
to connect



to unite



to divide



to arrive

order



mess



interesting



boring

