



## A SEAT AT THE TABLE



### INTRODUCING OUR PUBLIC FUNDRAISING CAMPAIGN: “A SEAT AT THE TABLE.”

Help us furnish our new Frank Lloyd Wright inspired building.  
Each piece of furniture represents the many lives that we will continue to change  
each day through our mission of empowering children with dyslexia,  
along with their parents, teachers and community.

**Phillips  
Fundamental  
Learning  
Center™**



*Specialists  
in bringing  
literacy  
to life.*

**A seat at the table** – that is all Katie wanted and expected when she started school. Little did she, Stan or I know that obtaining that seat would entail a 10-year battle involving self-sacrifice, tenacity, thousands of miles of travel and deep pockets. Why? Because Katie is one of the 1 in 5 who is dyslexic, but our state of Kansas has refused to identify it or recognize it as a learning disability. These students have not qualified for IEPs nor have their teachers known how to teach a child with dyslexia to read.

Katie entered kindergarten with the expectation that now she would join her older sisters and brother with a seat at the table...she would learn to read! Sadly, it was not to be. As Stan and I desperately looked for answers, as her teachers' efforts were failing, we discovered touted methods of teaching a child to read suggested by Kansas educators and doctors...they included learning to juggle, re-learning how to crawl and vision therapy...*none gave Katie that seat she needed.*

Finally, a third grade teacher who had moved to Wichita from Texas, suggested that Katie might be dyslexic. We could find no one in Kansas who knew anything about dyslexia and certainly no one who could test for it, so began the first of many, many trips out of state to find answers. The first answer came in the form of diagnosis...profoundly dyslexic...and from there *the journey began to find the services needed to provide for Katie that seat she needed for academic success.*



**A SEAT AT THE TABLE**

We sent a wonderful educator, Mrs. Pangrac to Texas to learn to work with Katie four mornings a week at 7 a.m., which she did through seventh grade. Additionally, Katie spent four years at summer camps in North Carolina and New York State doing intensive remediation, and finally, beginning in eighth grade, she spent two years at a boarding school, Killdonan in Amenia, N.Y. that was geared toward total emersion in learning to read and focusing on the dyslexic student. After two years in N.Y., her teachers agreed that she was ready to be mainstreamed as a sophomore in high school, BUT with accommodation...that was not to be had in Kansas. Katie claimed her academic seat at Brewster Academy in Wolfeboro, N.H. from which she graduated with honors.

When we put Katie on the plane to travel to Killdonan as an eighth grader to begin the boarding school experience, I swore that if there was anything I could do to prevent this from being the only alternative for a bright, tenacious, dyslexic child to learn to read, write and spell, it would be my life's mission. Three years later, I met Jeanine Phillips and ultimately the Phillips Fundamental Learning Center was born.

**Please help us keep our super-powered dyslexic students in Kansas.  
Please help provide them *a seat at the table!***

*Gretchen Andoel*



Gretchen Andeel (right) with her daughter Katie Schild helping to accept the award for Small Business of the Year Award in 2016 in Washington, D.C.



# A seat at a PFLC table will transform many lives!

We hope you will enjoy viewing our new building, room by room... each carefully thought out with children, teachers and parents in mind.

As you flip through the pages, enjoy the story of Piper, a 2023 graduate of Rolph Literacy Academy. Piper entered our program as a 5-year-old who first attended public school. She is the granddaughter of RLA teacher, Miss Tammi, and the daughter of a mother also with dyslexia, Kelsi.



After her very first parent-teacher conference, where the teacher had nothing positive to say, Piper is now a thriving 11-year-old who will attend Faith Academy in the fall. Enjoy her journey in the following pages, and consider a gift to help more children, teachers and parents, like Piper, Tammi and Kelsi, gain a seat at the table.



## The face behind the vision

*“After 30 years of advocacy, we can now say dyslexia is recognized in the state of Kansas! We are excited for our new Frank Lloyd Wright inspired building, and we know that it will put a star on the map for dyslexia!”* — Jeanine Phillips


## How you can give:

Whether it's a single chair, six chairs, or an entire classroom, a gift at any capacity is appreciated. We will honor your gift by placing your name or honoree on the items you purchase so that the countless individuals we serve will know who has supported them on their journey with PFLC.



Use the QR code (at right) and order online or contact us at 316-684-READ (7323) to make a gift today.



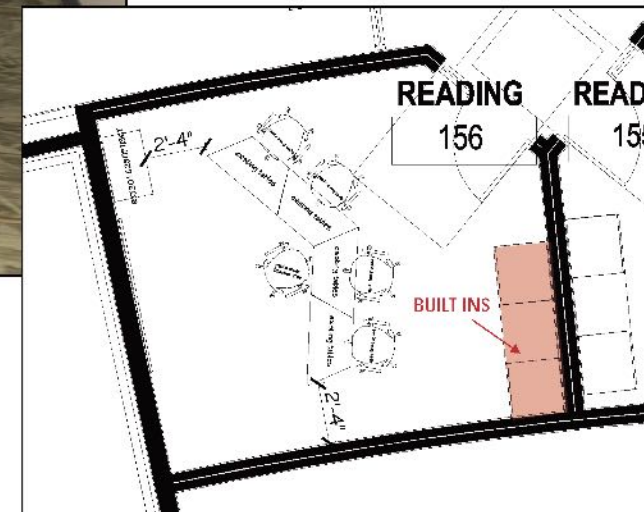
Darrel & Dee  
**Rolph  
 Literacy  
 Academy**  
 at  
**Phillips  
 Fundamental  
 Learning  
 Center™**  




## Reading Rooms (8) - \$3,334 per classroom



**TWO COMPLETE  
READING CLASSROOMS  
ALREADY SOLD!!!**



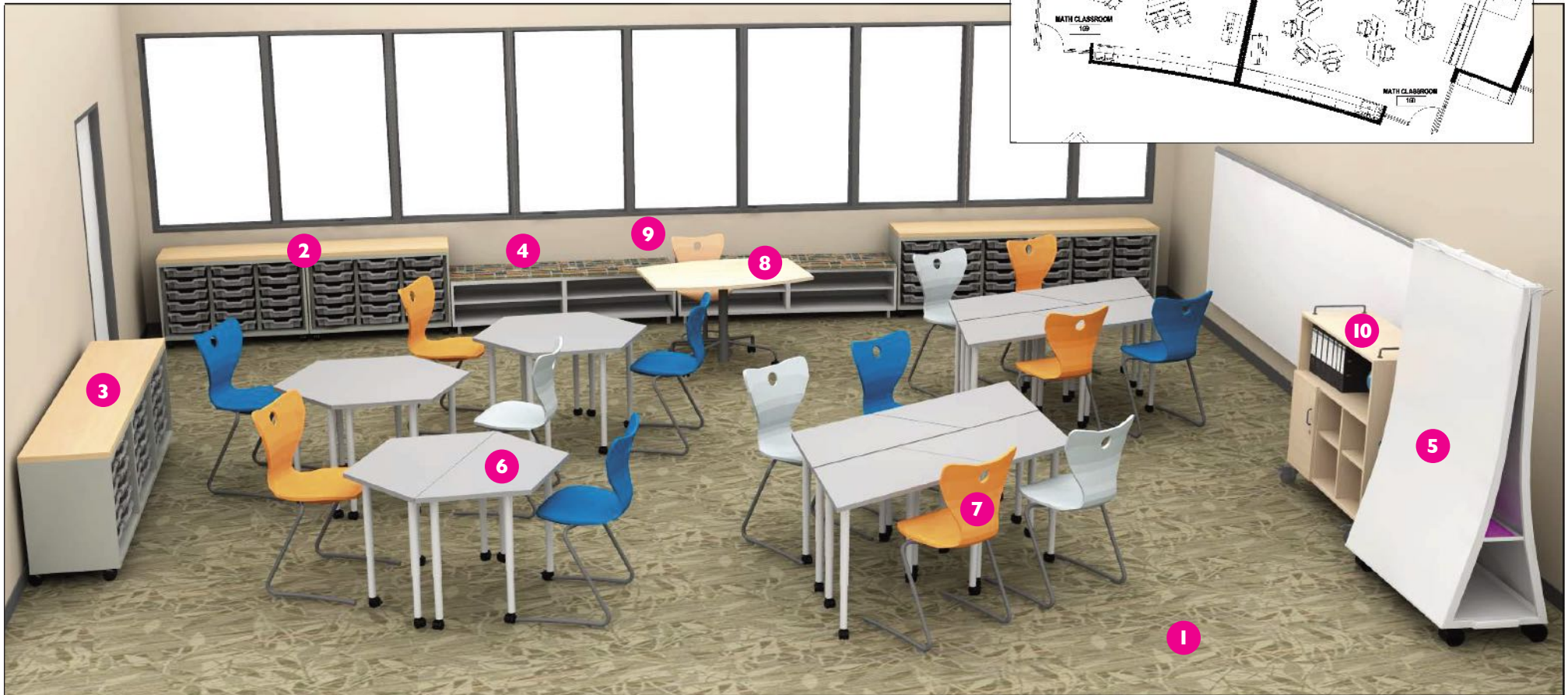
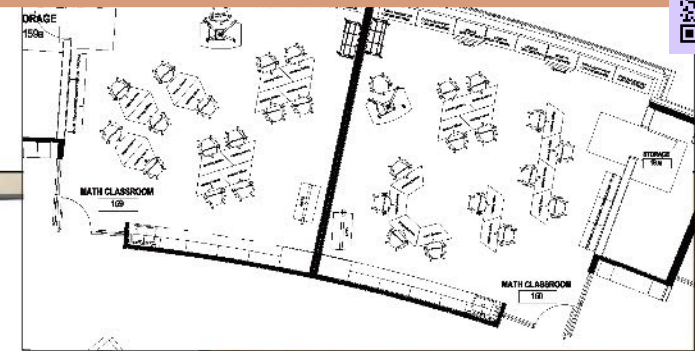
- 1 Ruckus Tote Storage 2 Column:** \$942 each
- 2 Trapezoidal Tables (4):** \$350 each
- 3 PantoSwing-LuPo Chairs (4):** \$120 each
- 4 PantoMove Teacher Chair:** \$512

**NUMBER OF CLASSROOMS NEEDED: 6**



“In the first week that (Piper) came to RLA, she had changed. She was telling us about what she was learning. She was showing us what her name looked like in cursive. She was using words like rectangular prism and she could identify it in the objects of the house. She told me what a plateau was. It was really evident from early on that there was nothing wrong with Piper. There was something wrong with the instruction for her, and she just needed to be taught in a different way.” — *Tammi Hope*

## Math Classrooms (2) - \$25,058 per classroom



- 1** Quarter Cube Floor Cushions *Not pictured (14)*: \$125 each
- 2** Ruckus Tote Storage 3 Column **(4)**: \$1,200 each
- 3** Ruckus Tote Storage 2 Column **(3)**: \$942 each
- 4** Steel Credenzas **(2)** \$1,320 each
- 5** Dry Erase Screen: \$2,400
- 6** Trapezoidal Tables **(14)**: \$350 each

- 7** PantoSwing-LuPo Chairs **(14)**: \$120 each
- 8** RondoLift Teacher Desk: \$2,250
- 9** PantoMove Teacher Chair: \$512
- 10** Shift+ Transfer Cabinet: \$1,300

**NUMBER OF CLASSROOMS NEEDED: 2**



# Technology Classroom - Total Cost \$20,072



- 1** Quarter Cube Floor Cushions *Not pictured (14)*: \$125 each
- 2** Steel Credenzas (4): \$1,320 each
- 3** Dry Erase Screen: \$2,400
- 4** Trapezoidal Tables (14): \$350 each
- 5** PantoSwing-LuPo Chairs (14): \$120 each
- 6** RondoLift Teacher Desk: \$2,250
- 7** PantoMove Teacher Chair: \$512
- 8** Shift+ Transfer Cabinet: \$1,300

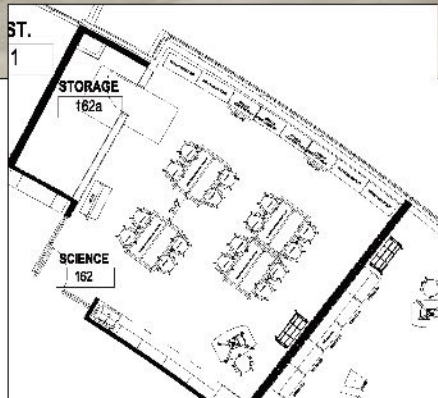
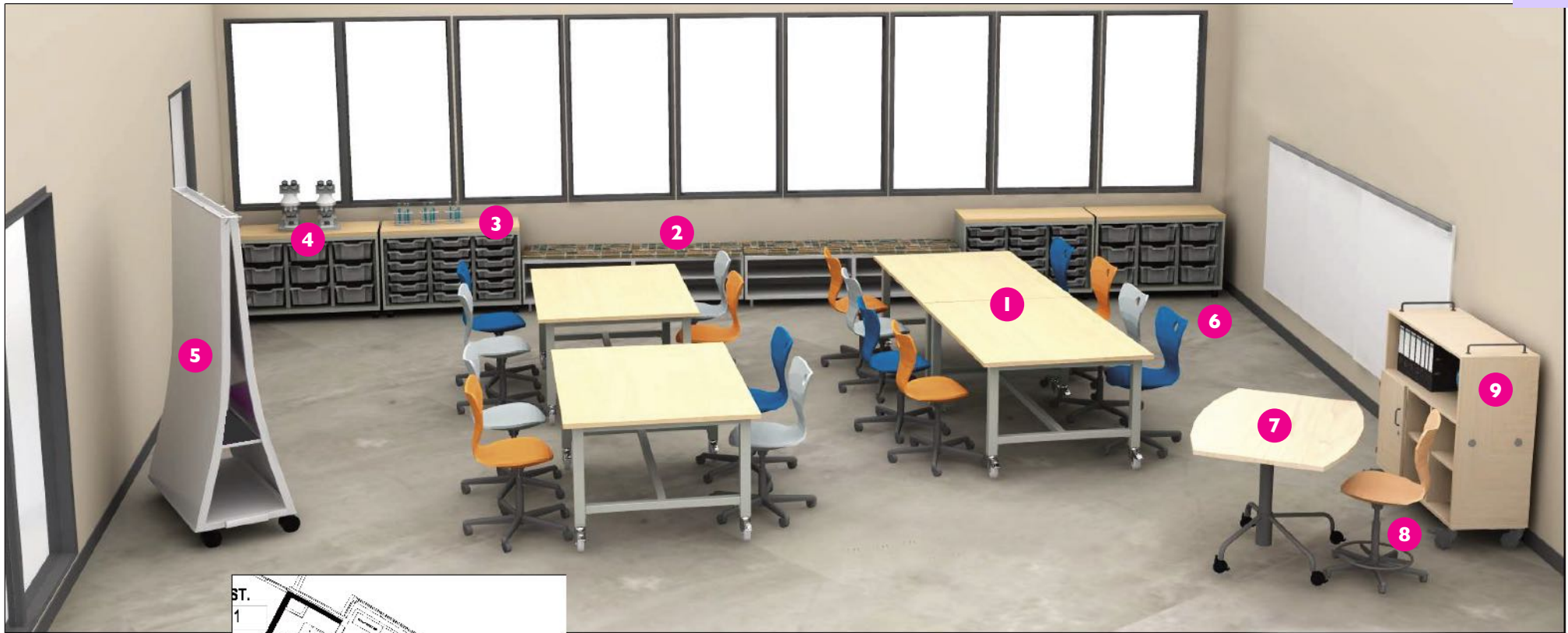
**NUMBER OF CLASSROOMS NEEDED: 1**

“Piper’s reading skills weren’t really that strong. RLA is really good at saying even though you can’t read, we know that you have knowledge to share and we’re going to give you an avenue to share that knowledge.” — *Tammi Hope*





## Science Classroom - Total Cost \$23,042



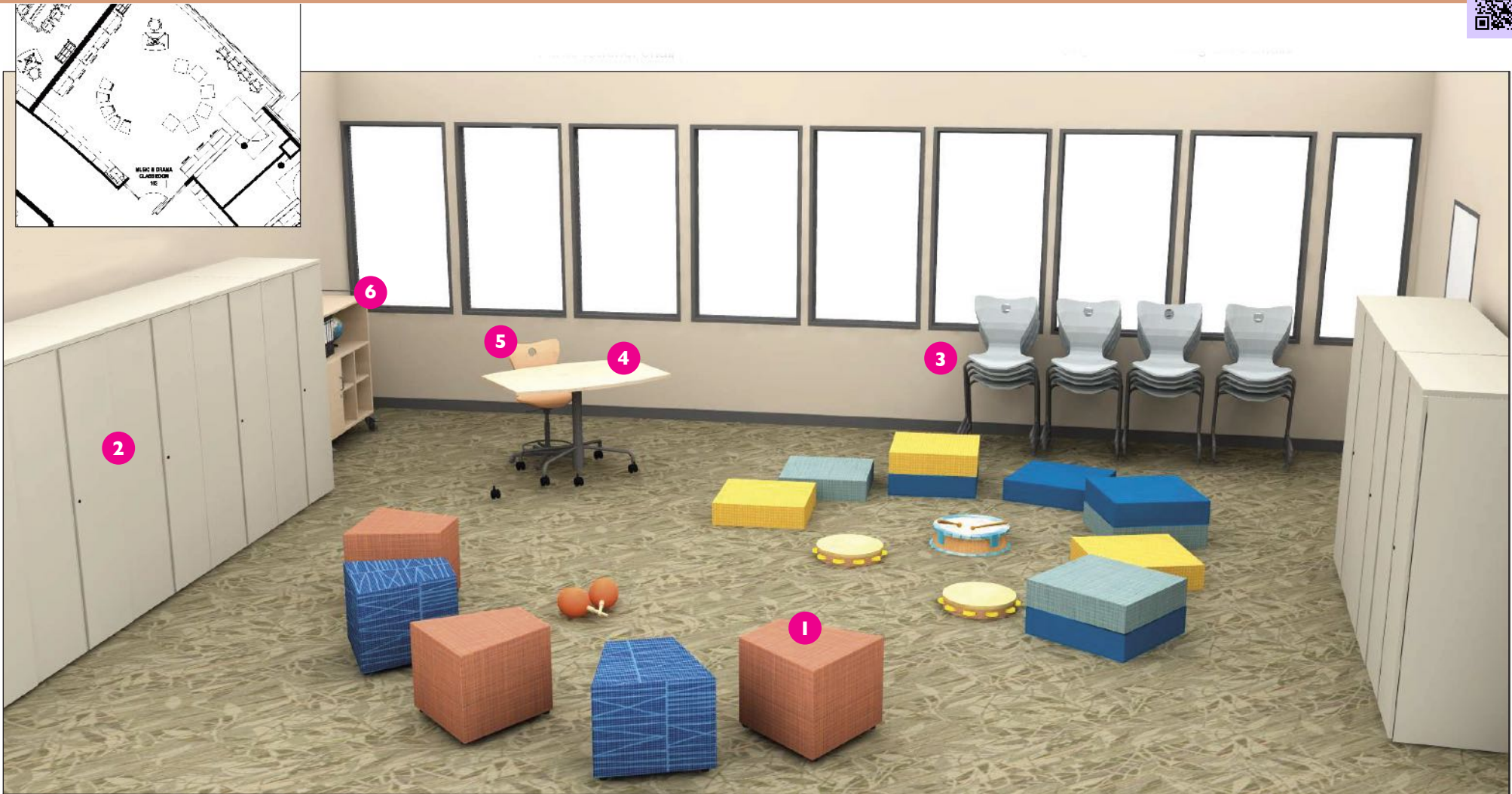
- 1 Stout Tables (4):** \$1,165 each
- 2 Steel Credenzas (2):** \$1,320 each
- 3 Ruckus Tote Storage 3 Column 18 Shelves (2):** \$1,200 each
- 4 Ruckus Tote Storage 3 Column 9 Shelves (2):** \$1,120 each
- 5 Dry Erase Screen:** \$2,400

- 6 PantoMove-LuPo Chairs (16):** \$290 each
- 7 RondoLift Teacher Desk:** \$2,250
- 8 PantoMove Teacher Chair:** \$512
- 9 Shift+ Transfer Cabinet:** \$1,300

**NUMBER OF CLASSROOMS NEEDED: 1**



## Music and Drama Classroom - \$17,932

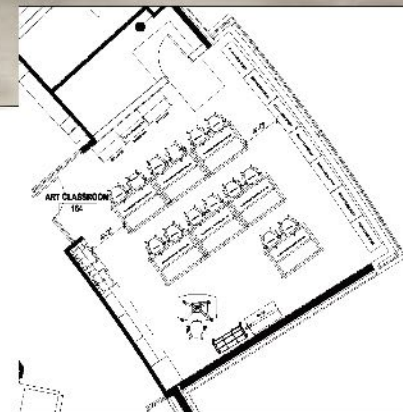
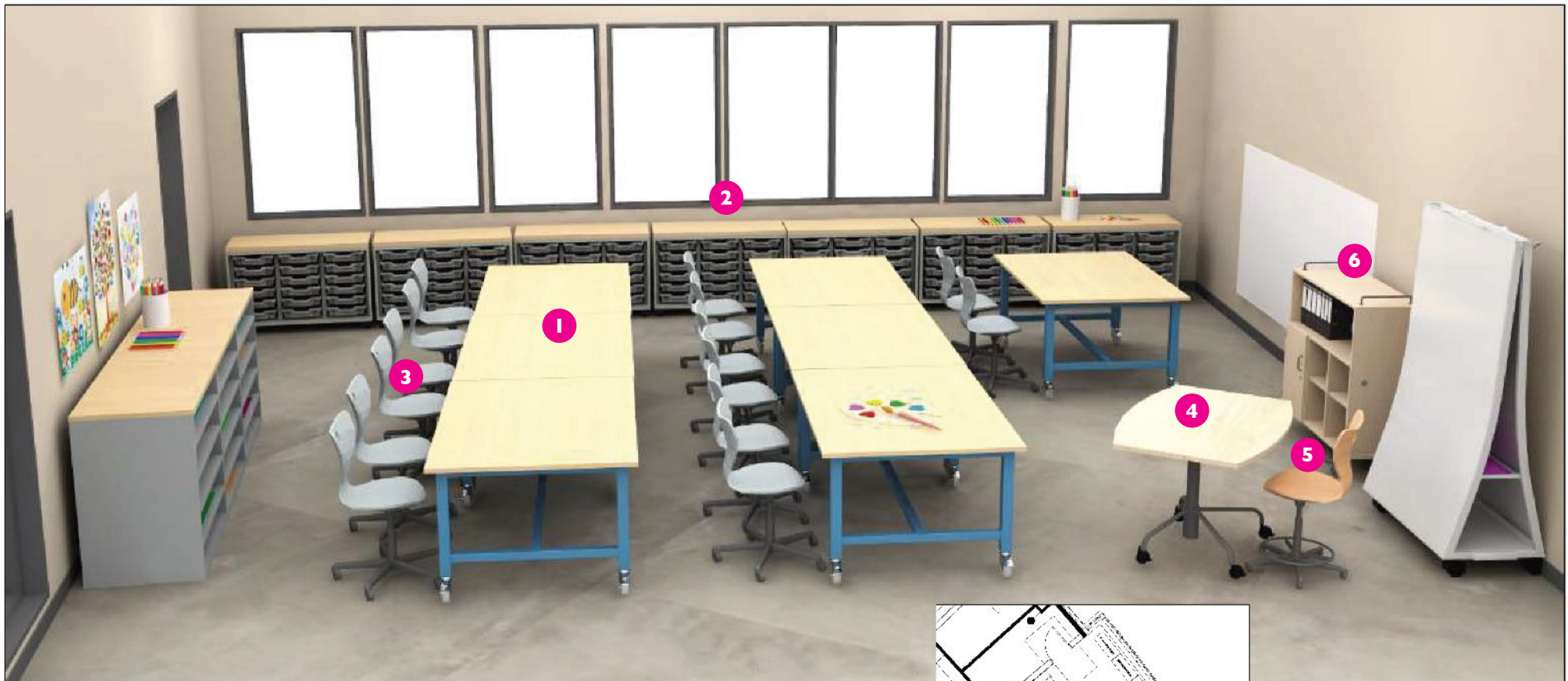


- 1 Quarter Cube Floor Cushions (14):** \$125 each
- 2 Custom Cabinets (6):** \$1,700 each
- 3 PantoSwing-LuPo Chairs (16):** \$120 each
- 4 RondoLift Teacher Desk:** \$2,250
- 5 PantoMove Teacher Chair:** \$512
- 6 Shift+ Transfer Cabinet:** \$1,300

**NUMBER OF CLASSROOMS NEEDED: 1**



“I know that some of the things that Piper has gained (at RLA), she would not have gained in a traditional environment. RLA really works to empower her through the struggle. So the focus has never been about what she can't do, but what she can. We wouldn't have the powerhouse of the individual that we have now, who can clearly see the balance of strengths and weaknesses and recognize, 'I do have some weaknesses, but these are my strengths and there are lots of them.'” — *Tammi Hope*

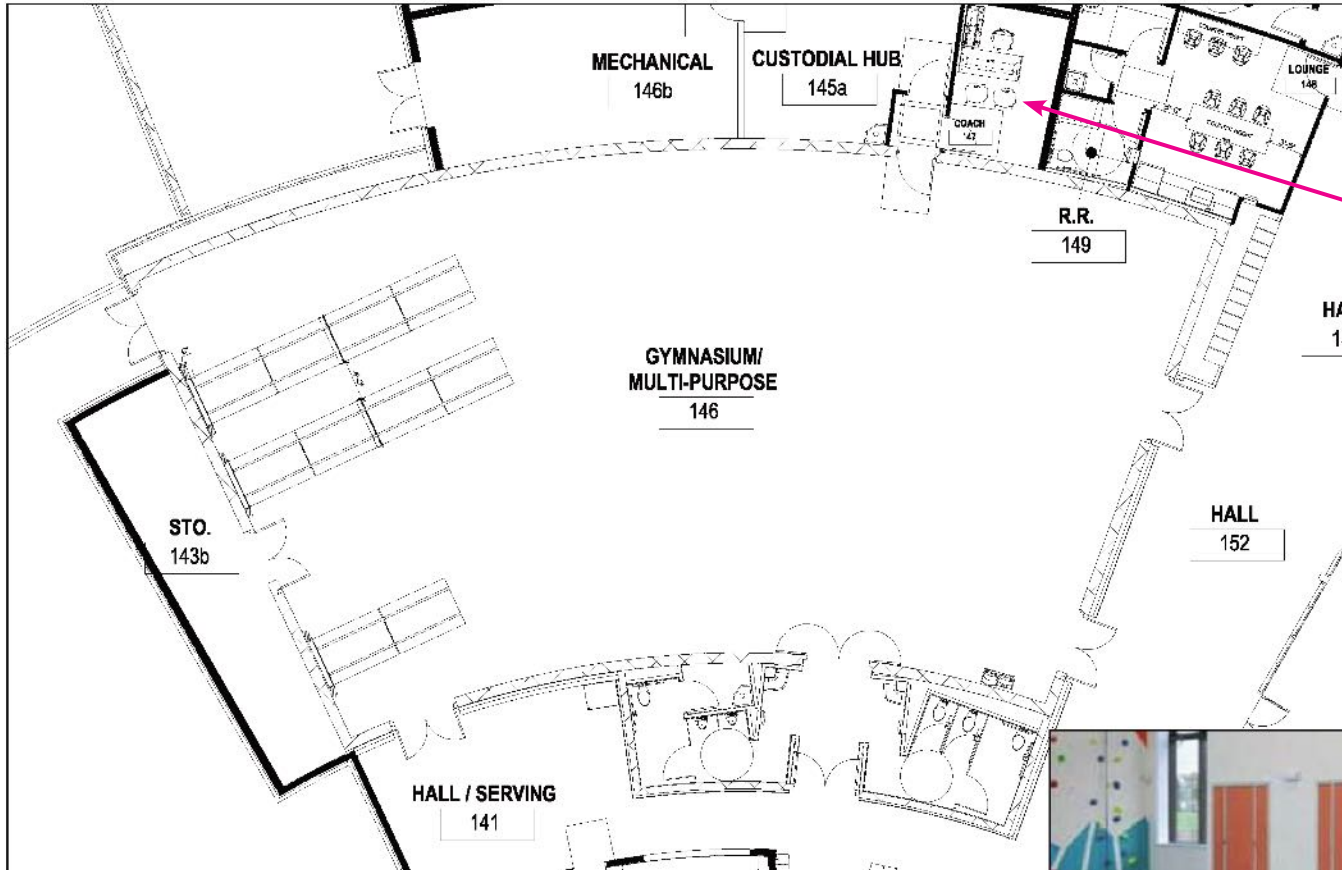


- 1 Stout Tables (7):** \$1,165 each
- 2 Ruckus Tote Storage 3 Column 18 Shelves (7):** \$1,200 each
- 3 PantoMove-LuPo Chairs (14):** \$290 each
- 4 RondoLift Teacher Desk:** \$2,250
- 5 PantoMove Teacher Chair:** \$512
- 6 Shift+ Transfer Cabinet:** \$1,300

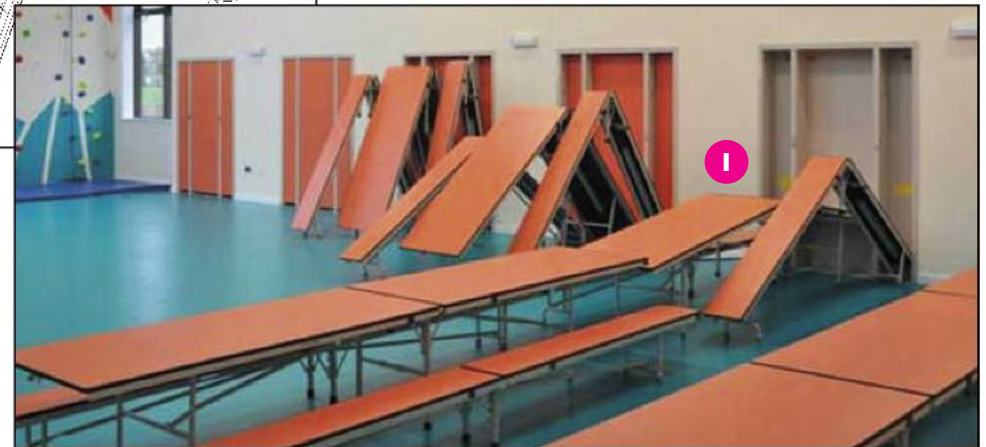
**NUMBER OF CLASSROOMS NEEDED: 1**



# Gymnasium/Multi-Purpose Room & Coach Office



Coach Office: \$4,000  
**SOLD!!!**

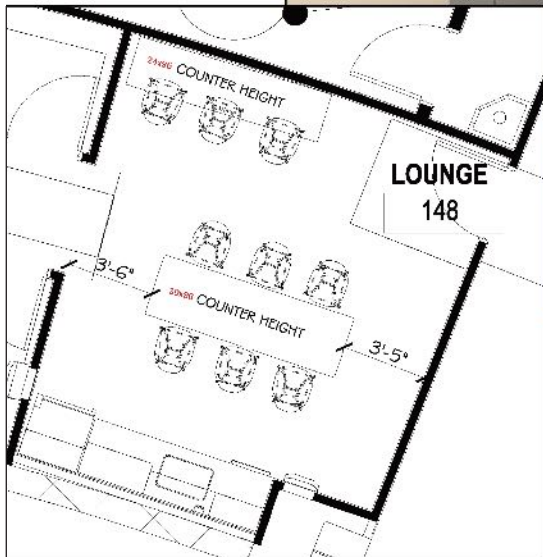
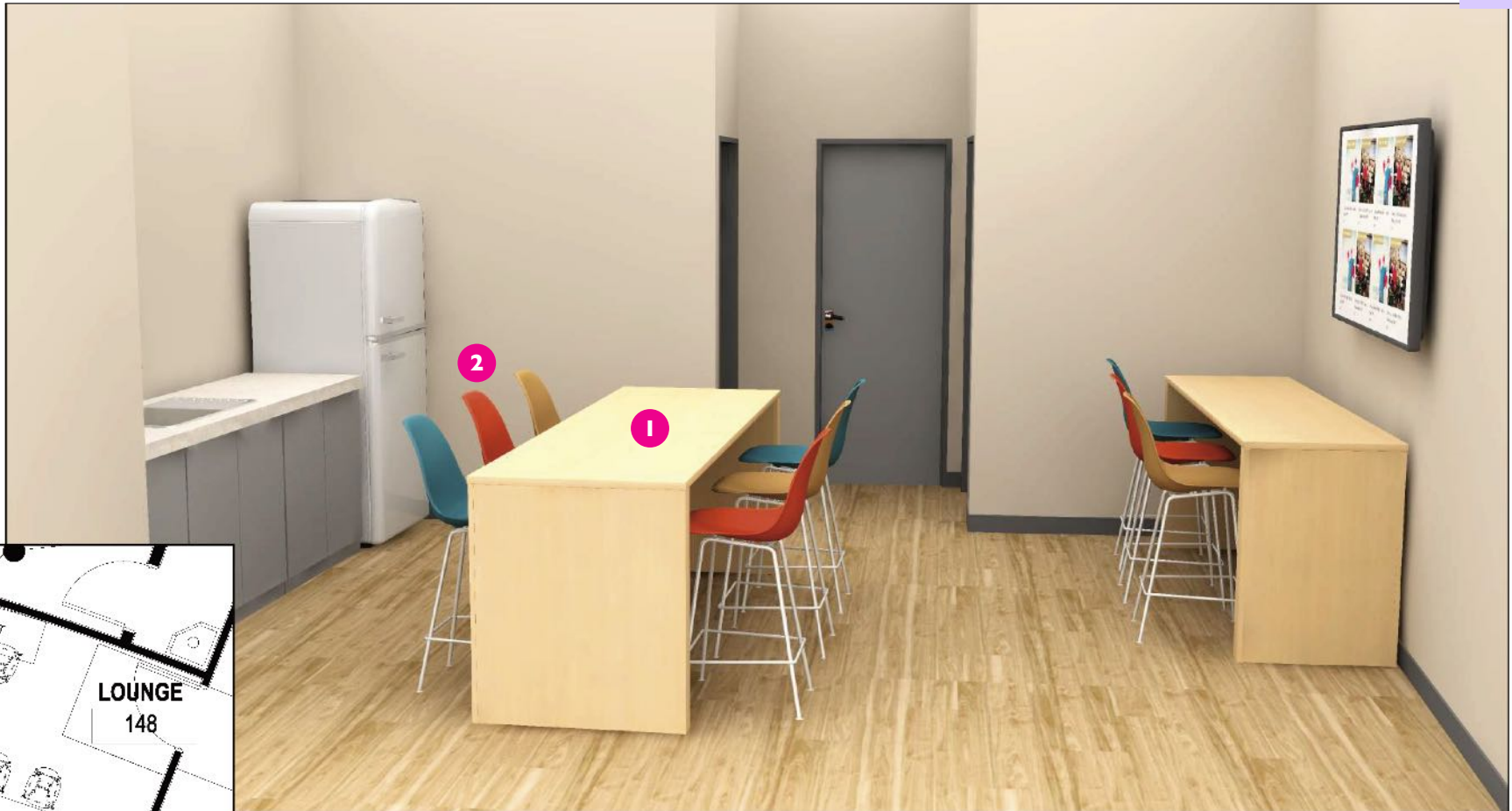


*Gymnasium/Multi-Purpose Room*

**1** Wall Pocket Tables and Benches (10): \$3,400 each

**TOTAL: \$34,000**





**1** Strassa Work Tables (2): \$2,440 each

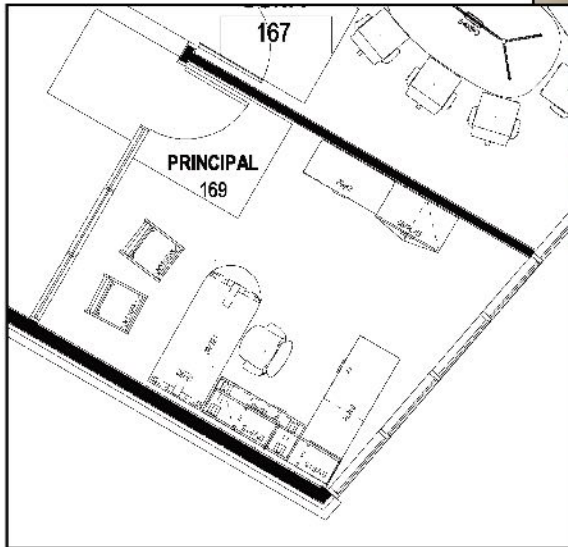
**2** Plastic Stools (9): \$550 each

**NUMBER OF ROOMS NEEDED: 1**

“On her 10th birthday, she opened up birthday cards and read them. I think that was the first time she publicly read to everybody. It’s really something you take for granted.” — Tammi Hope



## Principal's Office - \$9,267



- 1** Desk system: \$5,837
- 2** Vertical Tower Storage: \$1,655
- 3** Desk Chair: \$465
- 4** Tizelle Guest Chairs (2): \$655 each

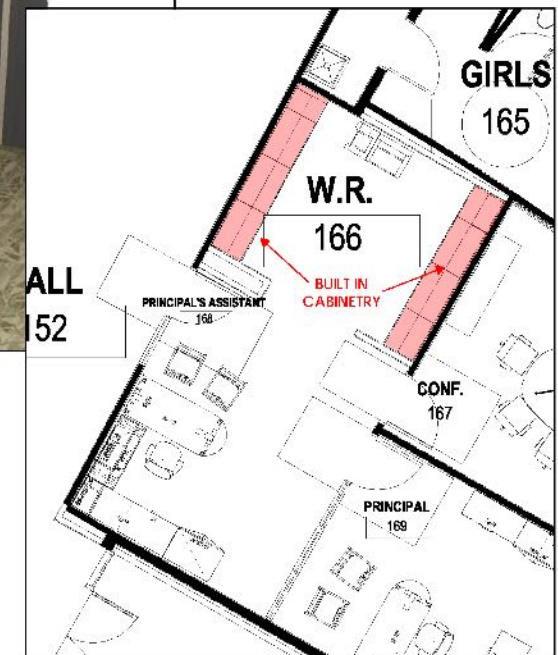
**NUMBER OF OFFICES NEEDED: 1**

## Principal's Assistant's Office - \$9,267

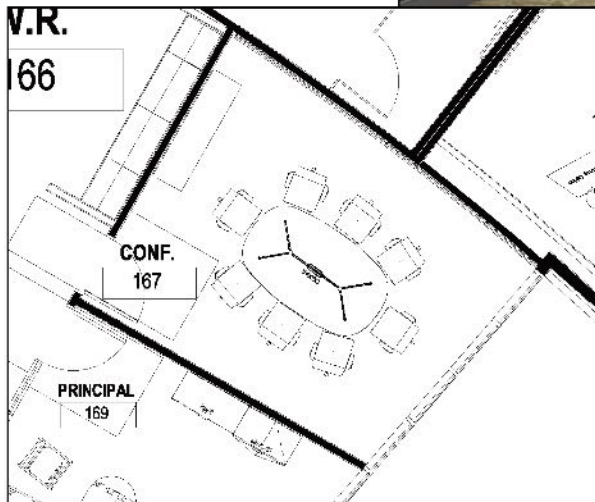


- 1 Desk system: \$5,837
- 2 Vertical Tower Storage: \$1,655
- 3 Desk Chair: \$465
- 4 Tizelle Guest Chairs (2): \$655 each

**NUMBER OF OFFICES NEEDED: 1**



## Conference Room - \$10,823



- 1 Credenza:** \$4,143
- 2 Conference Table:** \$1,400
- 3 Office Chairs (8):** \$660 each

**NUMBER OF ROOMS NEEDED: 1**



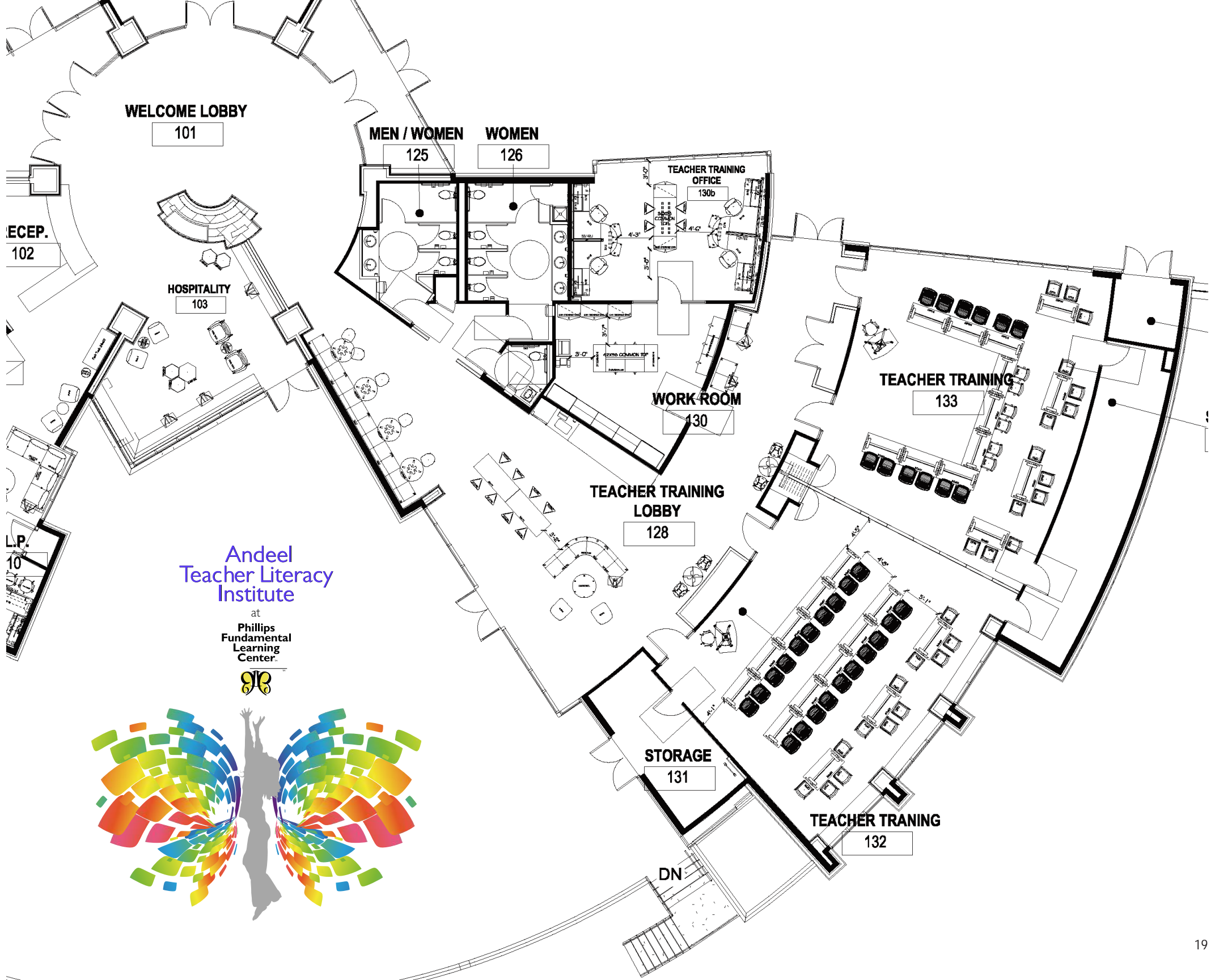


# Flexible interiors for Teacher Training.



Teaching teachers from across the region and remotely around the world will require flexibility of space and technical arrangements to accommodate their needs in any given class. Classes in Structured Literacy using Alphabetic Phonics, The Sound Case, Science, Technology, Math and other proven curriculum that utilize Science of Reading techniques will be taught here.





**Andeel  
Teacher Literacy  
Institute**

at  
Phillips  
Fundamental  
Learning  
Center.

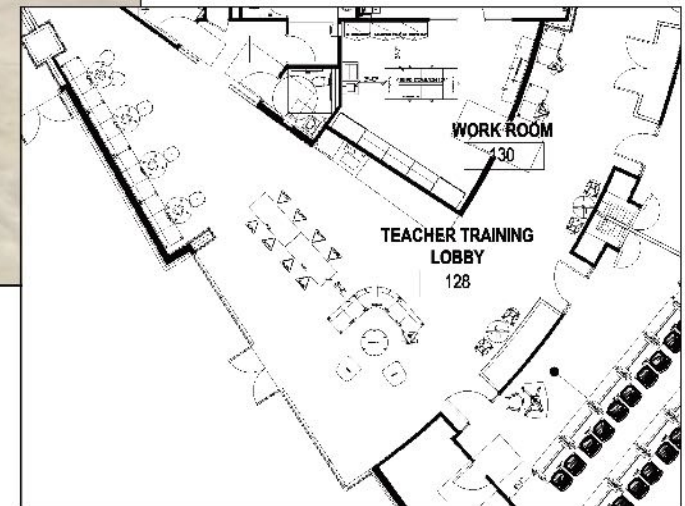


## Teacher Training Lobby - \$32,414



Andeel  
Teacher Literacy  
Institute

at  
Phillips  
Fundamental  
Learning  
Center.

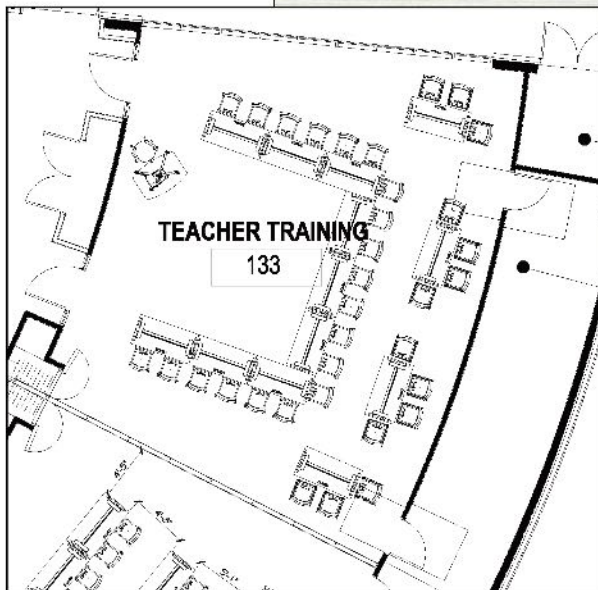
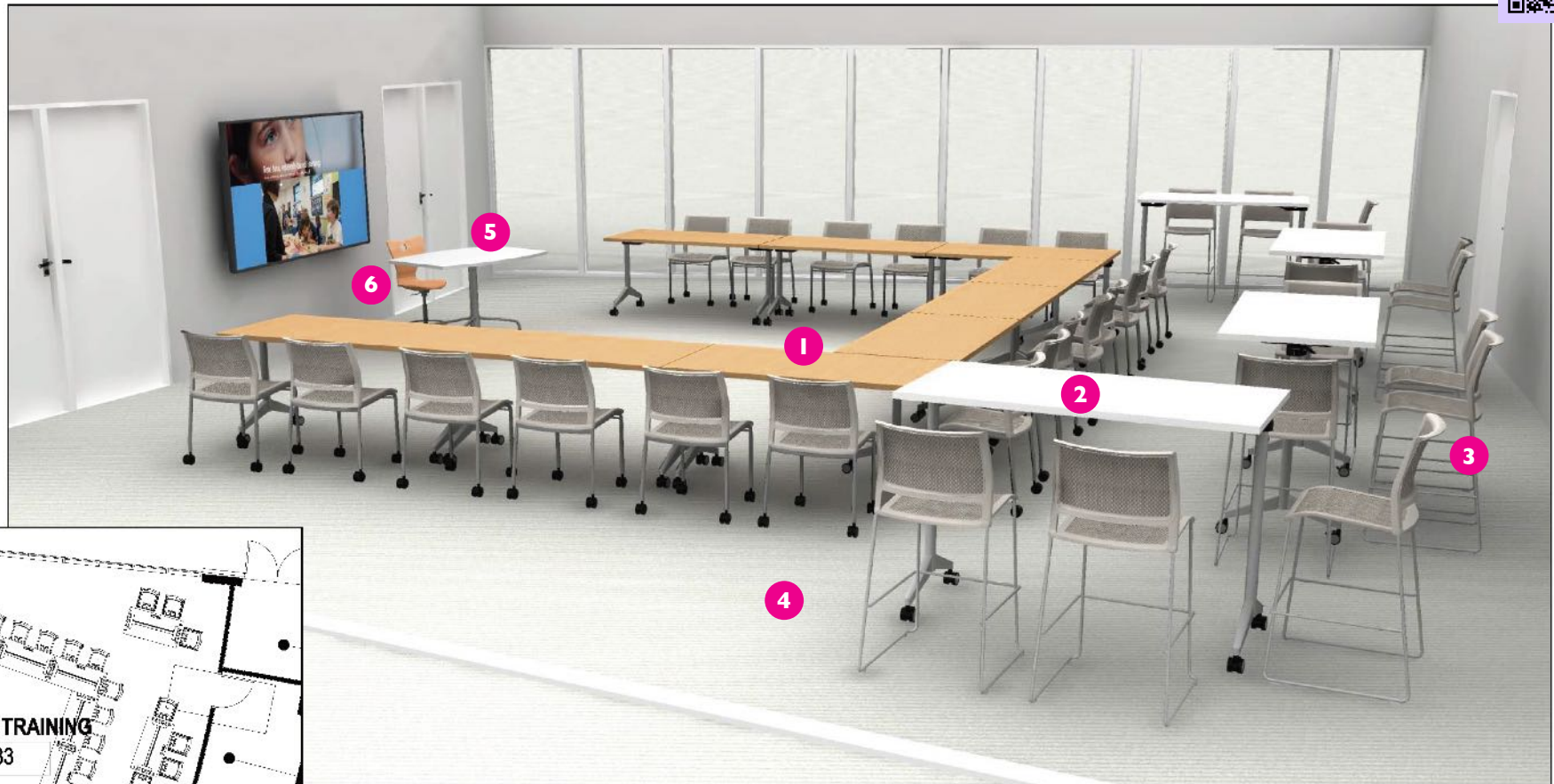


- 1 Mabel Chairs (2):** \$925 each
- 2 Fringe 3-Seat Lounges (4):** \$2,296 each
- 3 Fringe Rounded Lounge:** \$5,500
- 4 Boost Hex Ottomans (3):** \$580 each
- 5 Strassa Work Table 35":** \$2,240

- 6 Strassa Work Table 41":** \$2,500
- 7 Rizora Stools (8):** \$875 each
- 8 Large Round Tables (6):** \$400 each

**NUMBER OF ROOMS NEEDED: 1**

## Teacher Training Classrooms (2) - \$47,174 per classroom

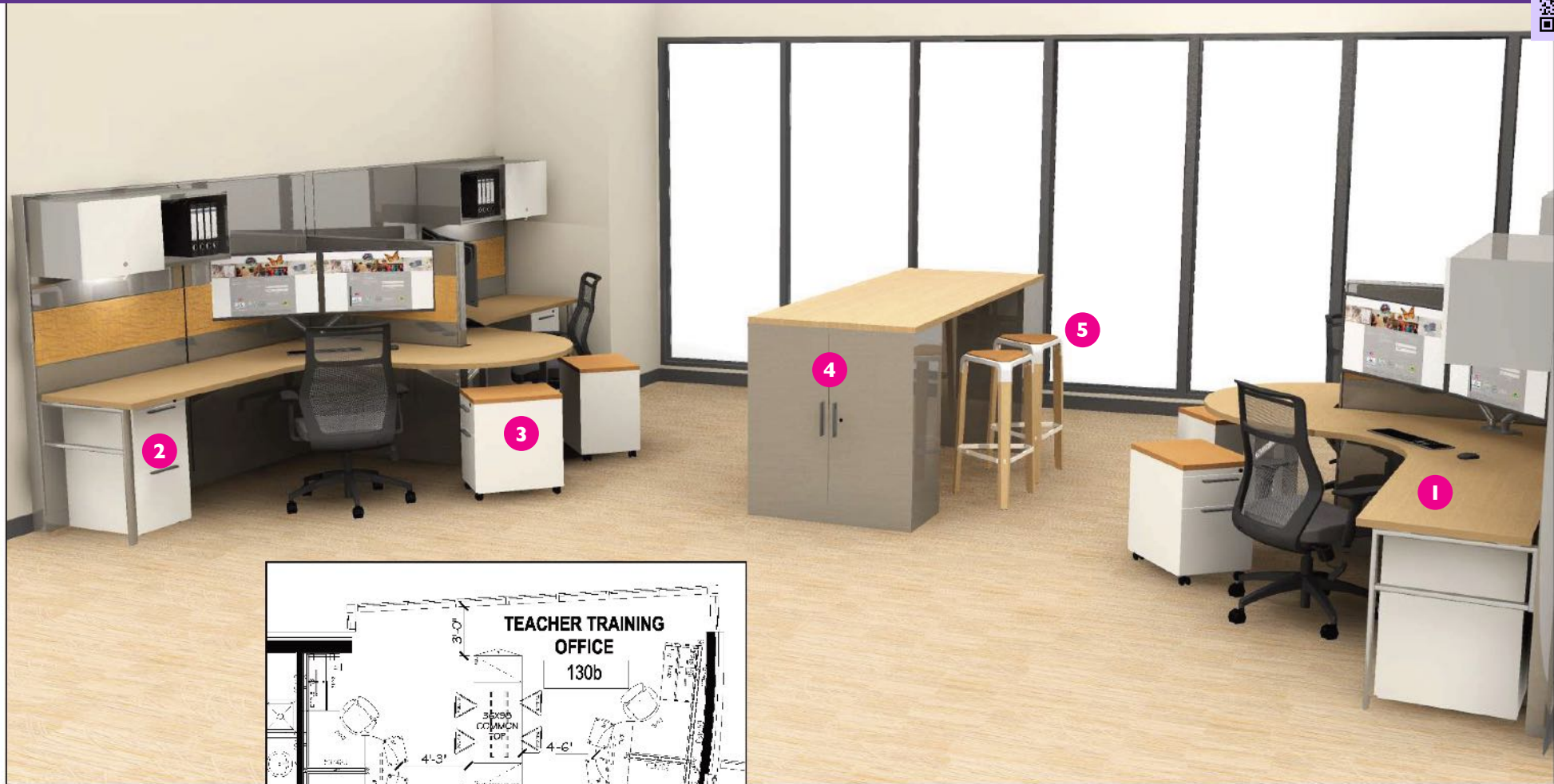


- 1 Pirouette Training Tables (20):** \$870 each
- 2 Pirouette Cafe Tables (8):** \$980 each
- 3 Opt4 Cafe Stools (16):** \$992 each
- 4 Transport Dollies *Not pictured* (6):** \$550 each
- 5 RondoLift Desk:** \$2,250
- 6 PantoMove Teacher Chair:** \$512

**NUMBER OF CLASSROOMS NEEDED: 2**

“All those teachers get not only the training, but they get to see first hand the difference it makes in the life of a child. Being able to come to a school and see all these children in this environment is tangible evidence of what happens when you serve children in this way.” — *Tammi Hope*

## Teacher Training Instructor Stations - \$19,845



**1** Desk stations (4): \$2,885 each

**2** Stationary Filing Cabinets (4): \$315 each

**3** Rolling Filing Cabinets (4): \$315 each

**4** Storage Work Island: \$2,285

**5** Rizora Bar Stools (4): \$875 each

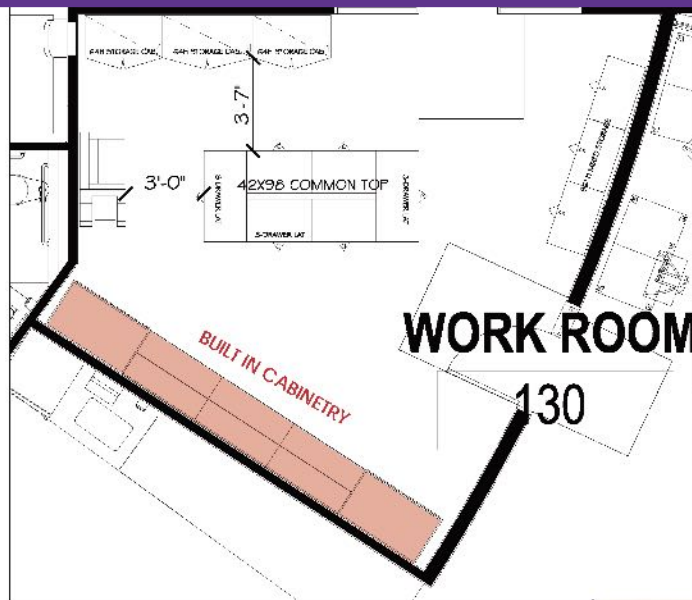
**NUMBER OF ROOMS NEEDED: 1**

Teacher Workroom - \$8,484



Andeel  
Teacher Literacy  
Institute

at  
Phillips  
Fundamental  
Learning  
Center.



**1** Storage Cases (3): \$886 each

**2** Storage Drawers & Counter Top: \$5,826

**NUMBER OF ROOMS NEEDED: 1**

# The Mission Center of PFLC.

Everyone who helps in our mission here needs a place to base their work. Talented individuals who have gained the skills to teach children with dyslexia to read, write and spell will call this workplace home. Executive, accounting, marketing, community outreach and grant proposal personnel with a passion for our mission will reside and help propel us forward from here.



“Everything about the design of the school is designed with the profile of a student with dyslexia in mind... their specific giftedness. I don't know what's going to happen, because (the kids) thrive where we are. What's going to happen when they are unleashed in an environment that's designed for them? That's going to be exciting and explosive.” — *Tammi Hope*





**Phillips  
Fundamental  
Learning  
Center.**



*Specialists  
in bringing  
literacy  
to life.*

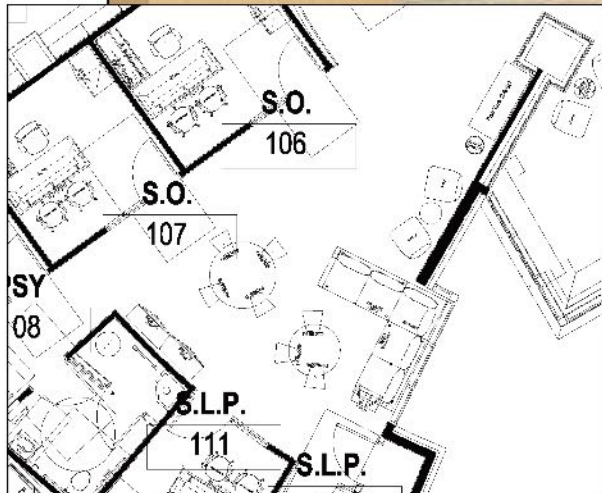
Waiting Area - \$17,760



Phillips  
Fundamental  
Learning  
Center.



*Specialists  
in bringing  
literacy  
to life.*



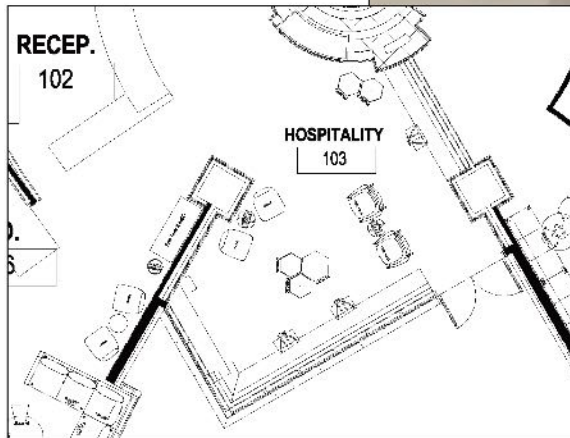
- 1 Snowflake Round Tables (2): \$715 each
- 2 Boost Ottomans (8): \$450 each
- 3 Mabel Chairs (2): \$1,250 each

- 4 Hoopla Ottomans (3): \$285 each
- 5 Hobsen Table: \$950

- 6 Waveworks Bookcase: \$2,400
- 7 Collette Sofa: \$6,025

**NUMBER OF ROOMS NEEDED: 1**

## Hospitality Area - \$14,720



- 1 Boost Ottomans (5):** \$675 each
- 2 Kona Laptop Tables (3):** \$735 each
- 3 Hobsen Chairs (2):** \$2,220 each
- 4 Hobsen Tables (2):** \$1,150 each
- 5 Mabel Chairs (2):** \$1,200 each

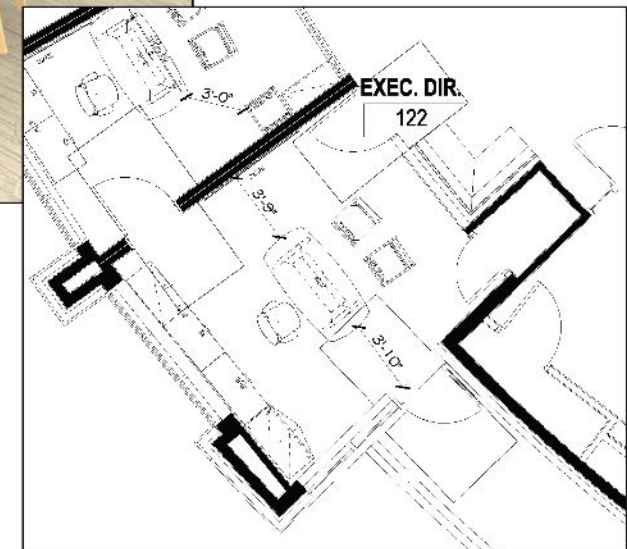
**NUMBER OF ROOMS NEEDED: 1**



“I’m jealous of all my friends who are staying another year. They’re lucky! They get to have this masterpiece every day!”

— Piper

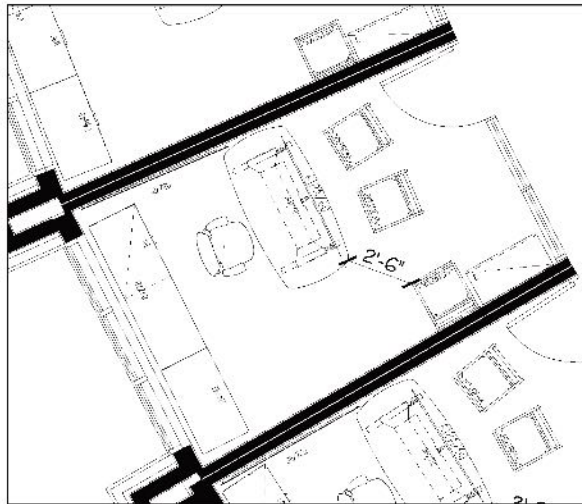
## Executive Director's Office - \$9,675



- 1 Oval Table Desk:** \$1,500
- 2 Storage Cabinetry:** \$5,000
- 3 Glass Board:** \$1,400
- 4 Guest Chairs (2):** \$655 each
- 5 Desk Chair:** \$465

**NUMBER OF OFFICES NEEDED: 1**

**Private Offices (4) - \$11,325 per office**

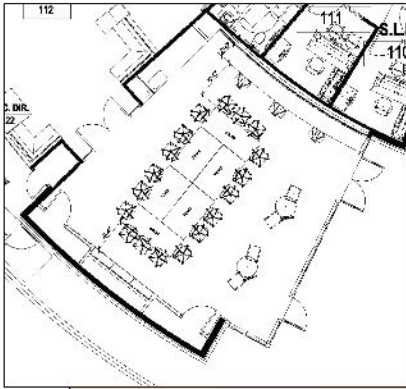


- 1 Oval Table Desk: \$1,500**
- 2 Storage Cabinetry: \$6,650**
- 3 Glass Board: \$1,400**

- 4 Guest Chairs w/ Arms (2): \$655 each**
- 5 Desk Chair: \$465**

**NUMBER OF OFFICES NEEDED: 4**

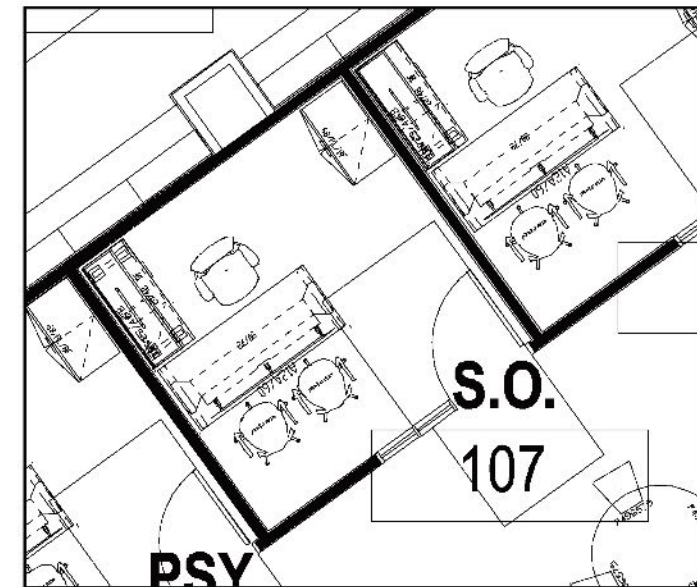
## Board Room - \$16,805 (minus table)



- 1 Boardroom Chairs:** \$2,600
- 2 Kona Laptop Tables (3):** \$735 each
- 3 Banquette:** \$12,000
- 4 Boardroom Table:** TBD

**NUMBER OF ROOMS NEEDED: 1**

## Screening Offices (5) - \$7,130 per office

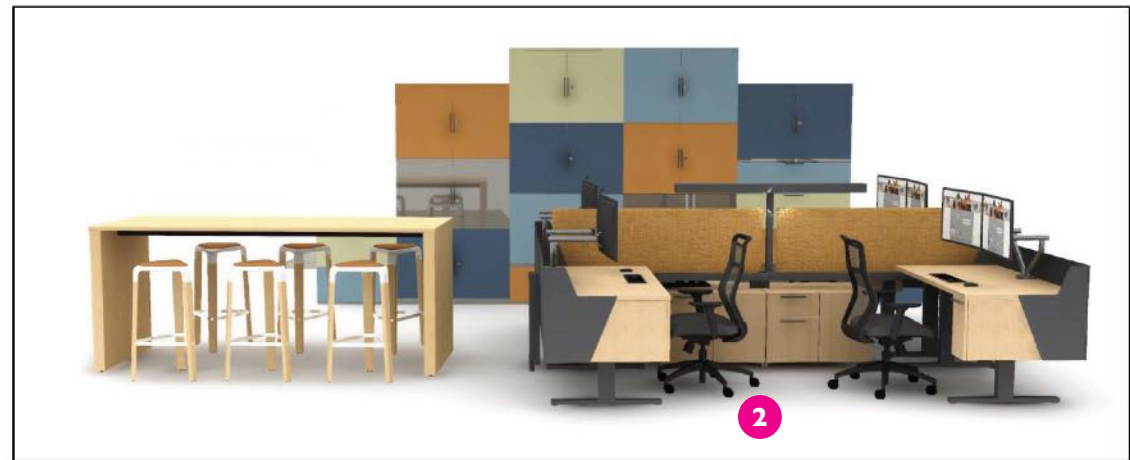
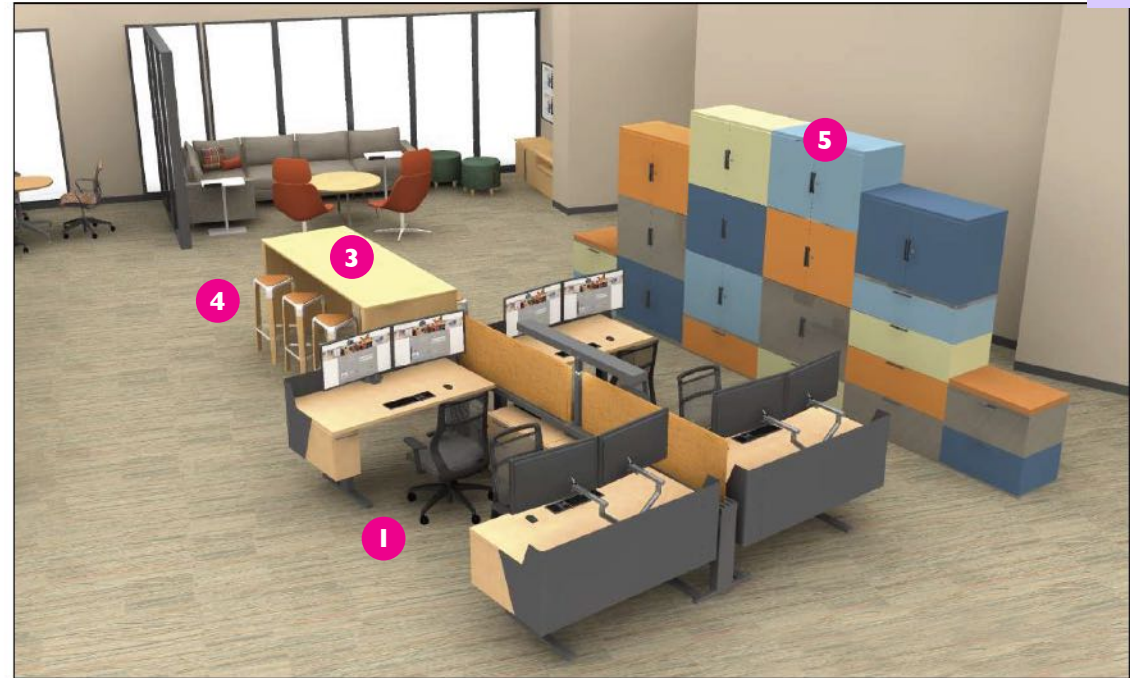
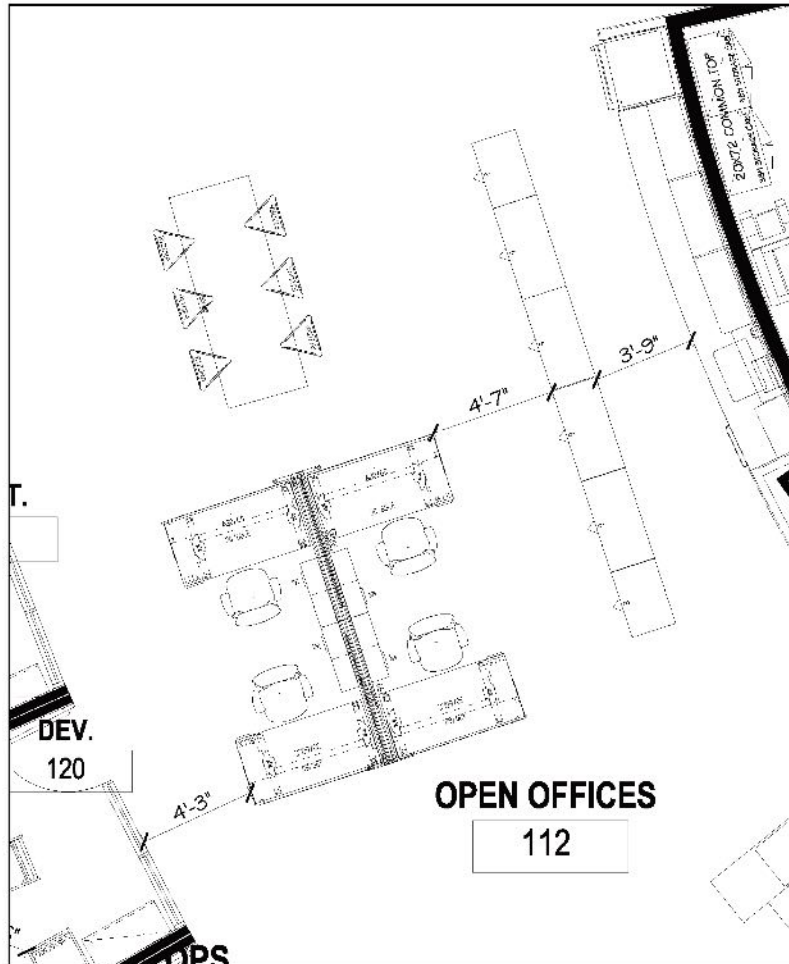


- 1 Height Adjustable Desk: \$1,725
- 2 Storage Cabinetry: \$4,090
- 3 Office Chair: \$465
- 4 PantoMove Swivel Chairs (2): \$425 each

**NUMBER OF OFFICES NEEDED: 5**

“When she went to go see Connie, after being so defeated at her first school, immediately when she came in here all she had was positive things to say about Piper’s intelligence really quickly. She was able to see all the positive things that Piper could still do. It was really great to hear.” – Kelsi

## Open Offices - \$35,812



- 1 4-desk workstation:** \$17,632
- 2 Desk Chairs (4):** \$465 each
- 3 Strassa Table:** \$2,950

- 4 Rizora Bar Stools (6):** \$875 each
- 5 Storage Cabinetry:** \$8,120

**NUMBER OF ROOMS NEEDED: 1**

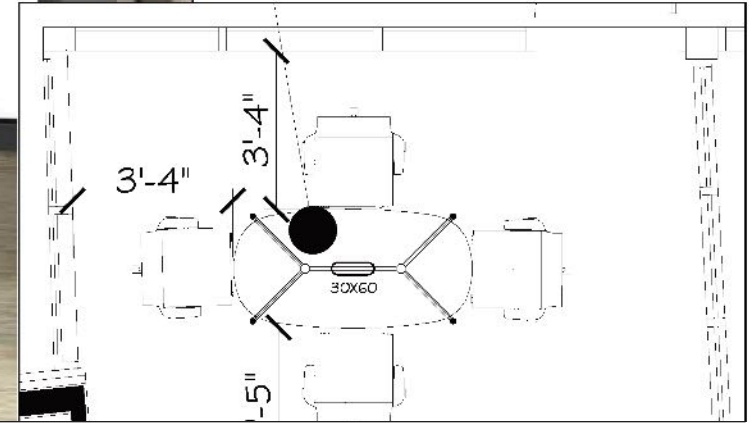


**Collaborative Meeting Area - \$3,352**

**NUMBER OF ROOMS NEEDED: 1**



- 1 Eames Conference Table: \$712**
- 2 Office Chairs (4): \$660 each**

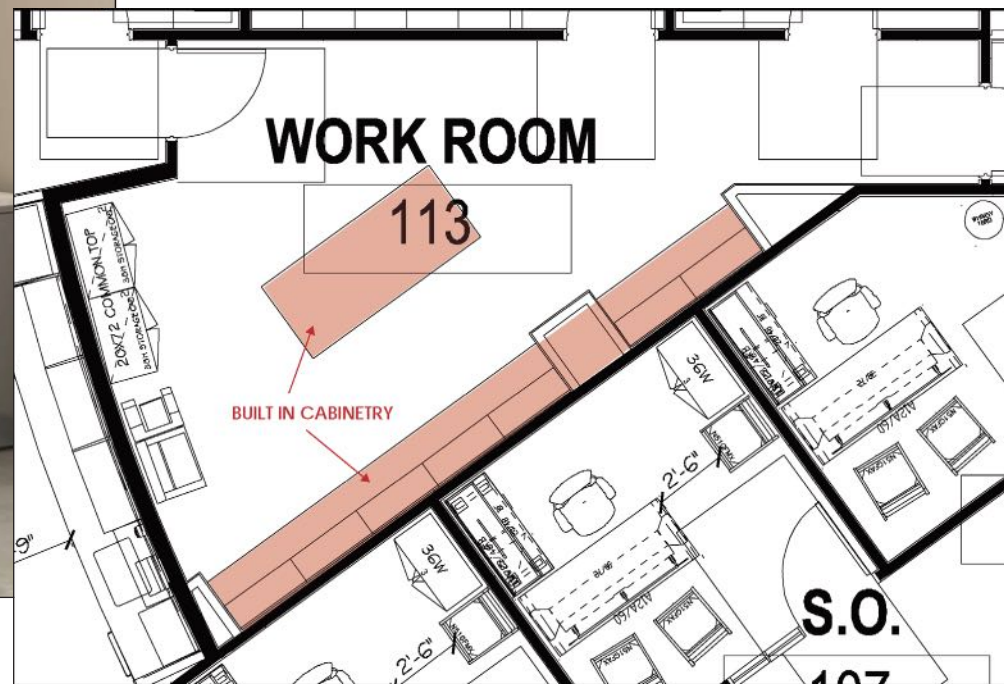


**Workroom - \$1,613**

**NUMBER OF ROOMS NEEDED: 1**



- 1 Storage Cabinetry: \$1,613**



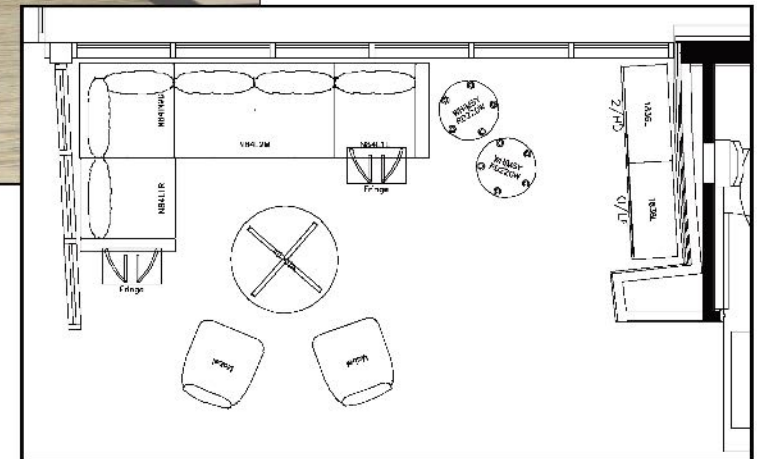
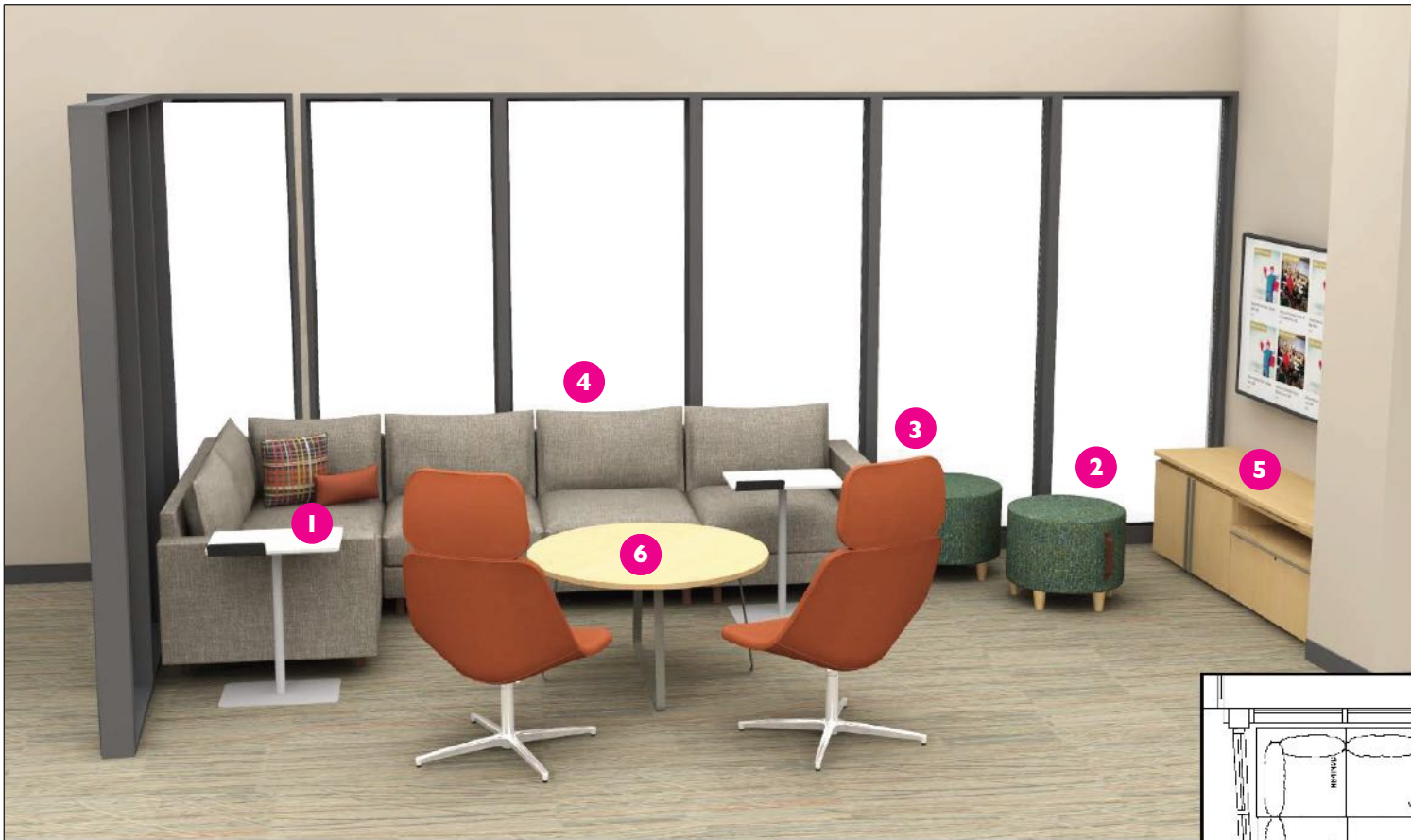
## Collaborative Lounge - \$13,790



Phillips  
Fundamental  
Learning  
Center.



*Specialists  
in bringing  
literacy  
to life.*



- 1 Laptop Tables (2):** \$735 each
- 2 Whimsy Ottomans (2):** \$600 each
- 3 Mabel Chairs (2):** \$1,070 each
- 4 Collette Sofa:** \$5,925
- 5 Tessera Storage:** \$1,600
- 6 Marnia Table:** \$1,455

**NUMBER OF ROOMS NEEDED: 1**



A SEAT AT THE TABLE

# Be part of the transformation by providing A Seat at the Table.

## **Here's how:**

Use the QR code to order online or contact us at 316-684-READ (7323) to make a gift or request an invoice be sent for payment by check.

Together, let's shape a future for education that embraces creativity, collaboration and architectural excellence.

Your gift will provide comfortable and inspiring spaces for learning and growth for children with dyslexia, as well as their parents and teachers, while honoring the legacy of Gretchen Andeel and her journey to finding a seat at the table for not only her daughter, but for ALL children.





*Once underestimated.  
Now empowered.*

TRANSFORMING  
EDUCATION



Phillips Fundamental Learning Center is a 501(c)(3) teacher/parent education center offering a teaching lab school for children 5 years -10 years old – specializing in those with dyslexia and other reading related difficulties located in the heart of the nation.



FRIENDS  
UNIVERSITY



**Phillips  
Fundamental  
Learning  
Center.**



*Specialists  
in bringing  
literacy  
to life.*

Phillips Fundamental Learning Center does not discriminate against staff, students, or parents of any race, color, national or ethnic origin, gender, gender expression or sexual orientation as to all the rights, privileges, programs, and activities generally accorded or made available to those who enter our facility. It does not discriminate on the basis of religious beliefs, race, color, national or ethnic origin, gender, gender expression or sexual orientation in administration of its educational policies, admissions policies, scholarship and loan programs, and athletic or other school-administered programs.

2220 E 21st Street N | Wichita, KS 67214 | 316-684-READ (7323) | [funlearn.org](http://funlearn.org) | [info@funlearn.org](mailto:info@funlearn.org)

©2023 Phillips Fundamental Learning Center

